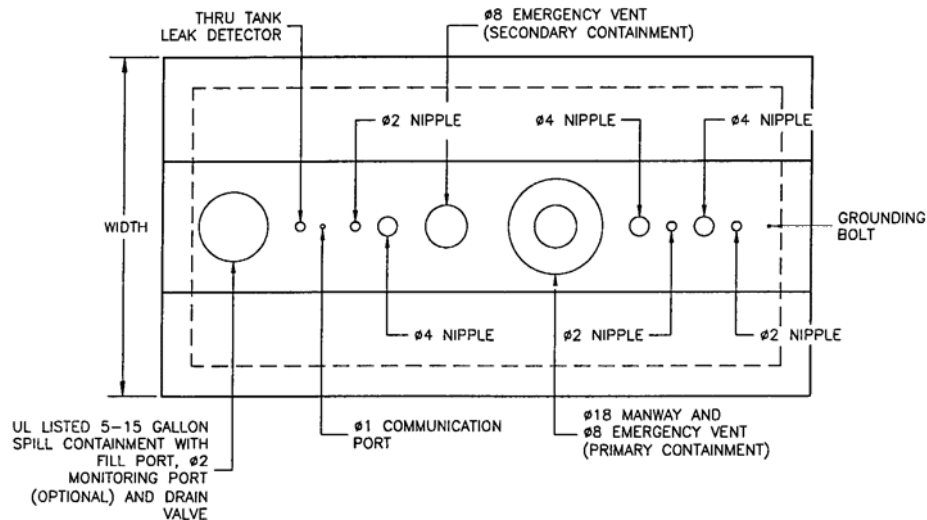
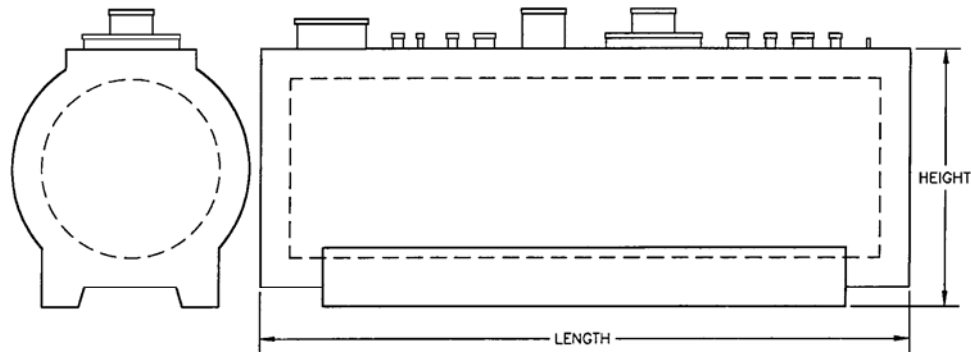


**Figure No. 5**  
**Cylindrical Tanks Weights and Dimensions \***



**Single Compartment**

SIZE	LENGTH	WIDTH	HEIGHT	WEIGHT
4000	11' - 11"	9' - 2.5"	9' - 4.5"	46,000
5200	15' - 1.5"	9' - 2.5"	9' - 4.5"	52,000
6000	17' - 3"	9' - 2.5"	9' - 4.5"	60,000
8000	22' - 7"	9' - 2.5"	9' - 4.5"	74,000
10000	27' - 11"	9' - 2.5"	9' - 4.5"	82,000 <sup>‡</sup>
12000	33' - 3"	9' - 2.5"	9' - 4.5"	93,000 <sup>‡</sup>

- Cylindrical tanks are only available from certain manufacturing locations. Check with your Convault® distributor/salesman for availability in your area.
  - Multi-Compartment tanks are also available.
  - Nipple layout and design vary according to customer needs.
- ‡ Lightweight concrete used to reduce load weights for shipment.
- \* **NOTE:** These are nominal weights of the tanks. Check with your distributor/salesperson for accurate tank weight.