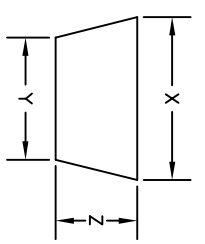


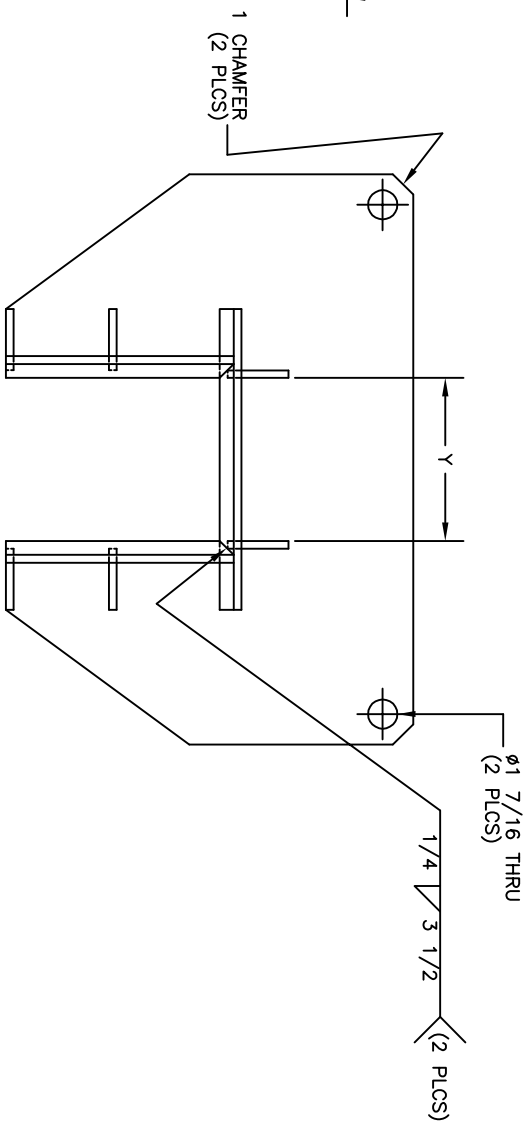
GUSSET-QTY. 6

- NOTES:
1. USE 1/2 THICK STEEL PLATE FOR BASE AND 3/8 THICK STEEL PLATE FOR GUSSET PLATES.
 2. TO OBTAIN "P" DIMENSION SEE TABLE.
 3. WELD GUSSETS TO SIDE AND END PLATES, THEN WELD THOSE ASSEMBLIES TO BOTTOM PLATE, ALL WELDS TO BE CONTINUOUS 1/4 FILLET.
 4. UNIT TO BE HOT-DIPPED GALVANIZED AFTER FABRICATION.
 5. FOUR (4) RESTRAINTS REQUIRED FOR 3000-6000 GAL. TANKS AND SIX (6) FOR 8000-12000 GAL. TANKS.
 6. "HILT" HSL METRIC M24 OR EQUIVALENT ANCHOR BOLTS.
 7. 6 1/8 MINIMUM EMBEDMENT DEPTH.
 8. 12" MINIMUM DISTANCE FROM EDGE OF CONCRETE SLAB/FOOTING.
 9. CONCRETE SLAB TO HAVE MINIMUM 5000 PSI COMPRESSIVE STRENGTH.

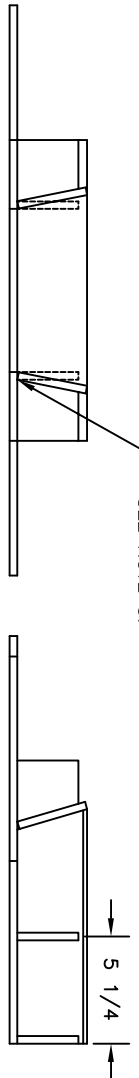


TANK LEG DIMENSIONS

X	Y	Z	P
7	6	4	.43
7	6	6	.29
7 1/2	6	6	.43
10	6	6	1.11
10	8	6	.58
11	8	6	.85
12	10	5	.69
14	12	6	.58
14 1/2	11 3/4	6 1/4	.75



FOR WELD DETAILS SEE NOTE 3.



THIS DRAWING PERTAINS TO THE 2007 CBC, 2006 IBC PROVISIONS FOR (SITE CLASS "D", 1.0 < S_{ds} ≤ 1.5)

7-30-09	UPDATED TO 2006 IBC, 2007 CBC	TYS	TYS	TEL	TEL	SCALE: 1:10(DR)	TEL: 800-222-7099	FAX: 209-632-4711
12-10-02	ADDED DIMENSION TO TABLE	JE	JE	TEL	TEL	SCALE: 1:10(DR)	FAX: 209-632-4711	
1-2-01	INITIAL RELEASE	JE	JE	DR	DR	SCALE: 1:10(DR)		
DATE	REVISION	DR	DR	CHK	CHK	SCALE: 1:10(DR)		

ALL DIMENSIONS ±1/16" UNLESS OTHERWISE SPECIFIED
ALL DIMENSIONS IN INCHES, UNLESS OTHERWISE SPECIFIED
STEEL PLATE THICKNESS DEPENDS UPON TANK SIZE

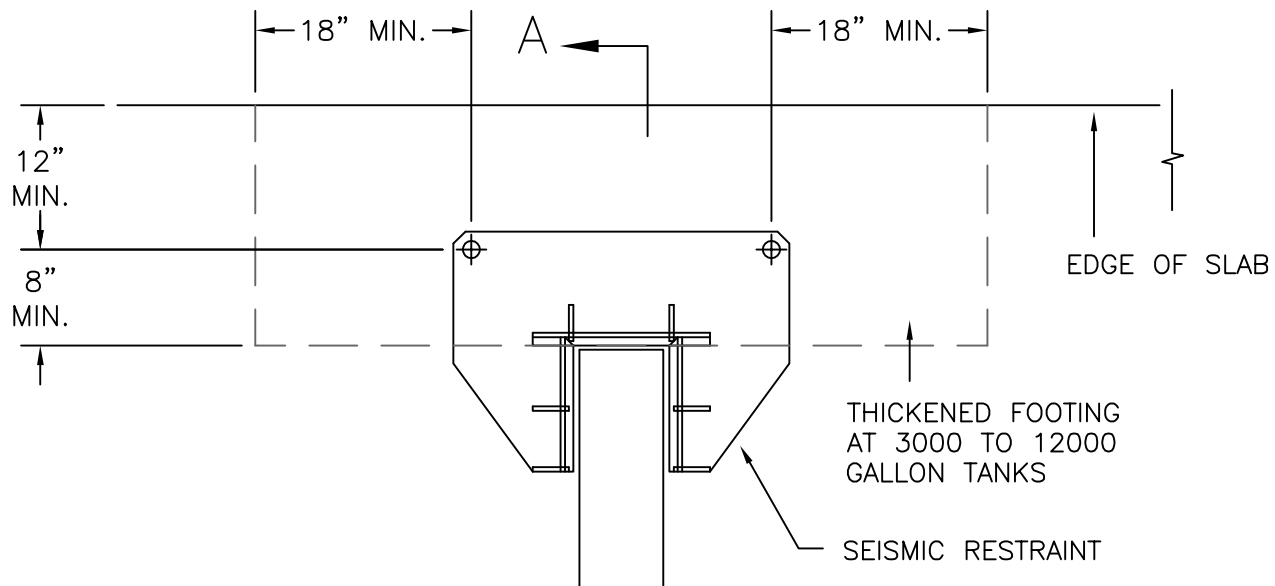
CONVAULT

SEISMIC RESTRAINTS FOR 3000-12000 GAL CONVAULT TANKS

DO NOT SCALE DRAWING

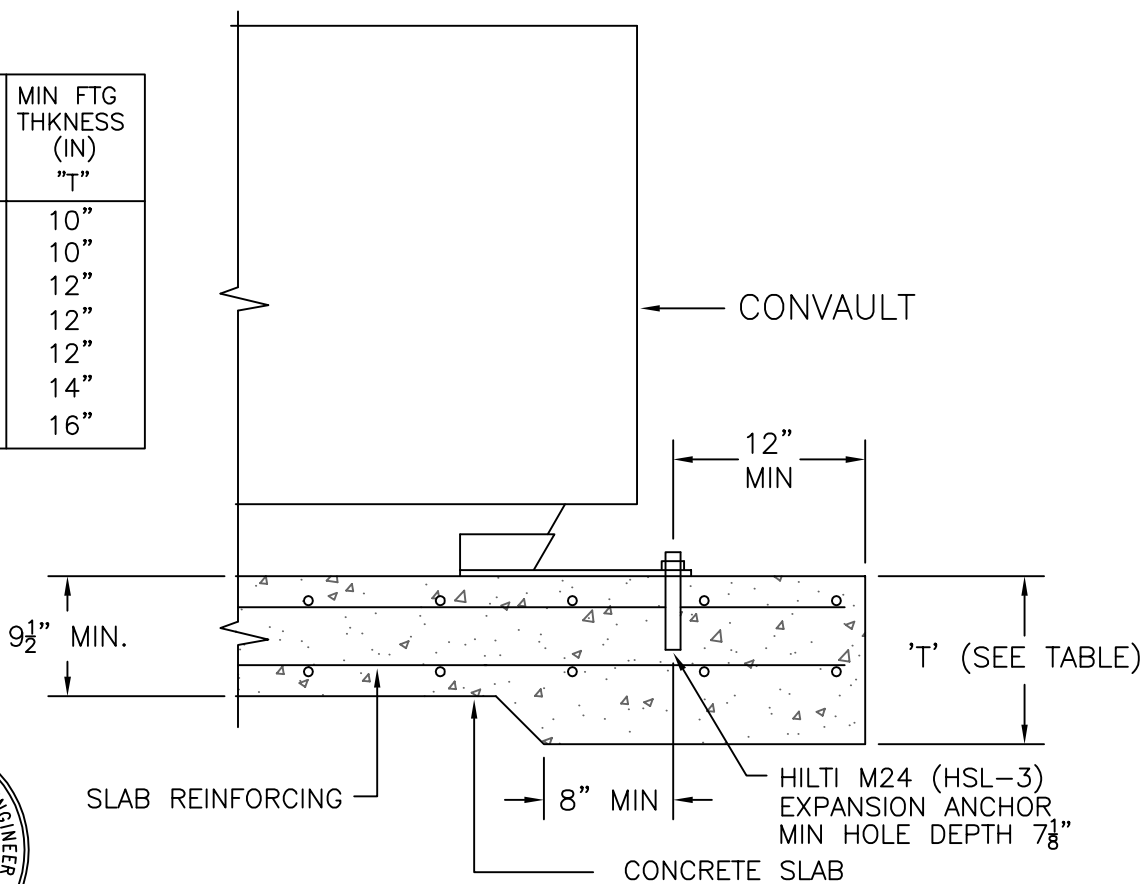
DWG. No: GEN001

Pg: 4

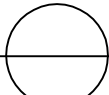


PARTIAL PLAN

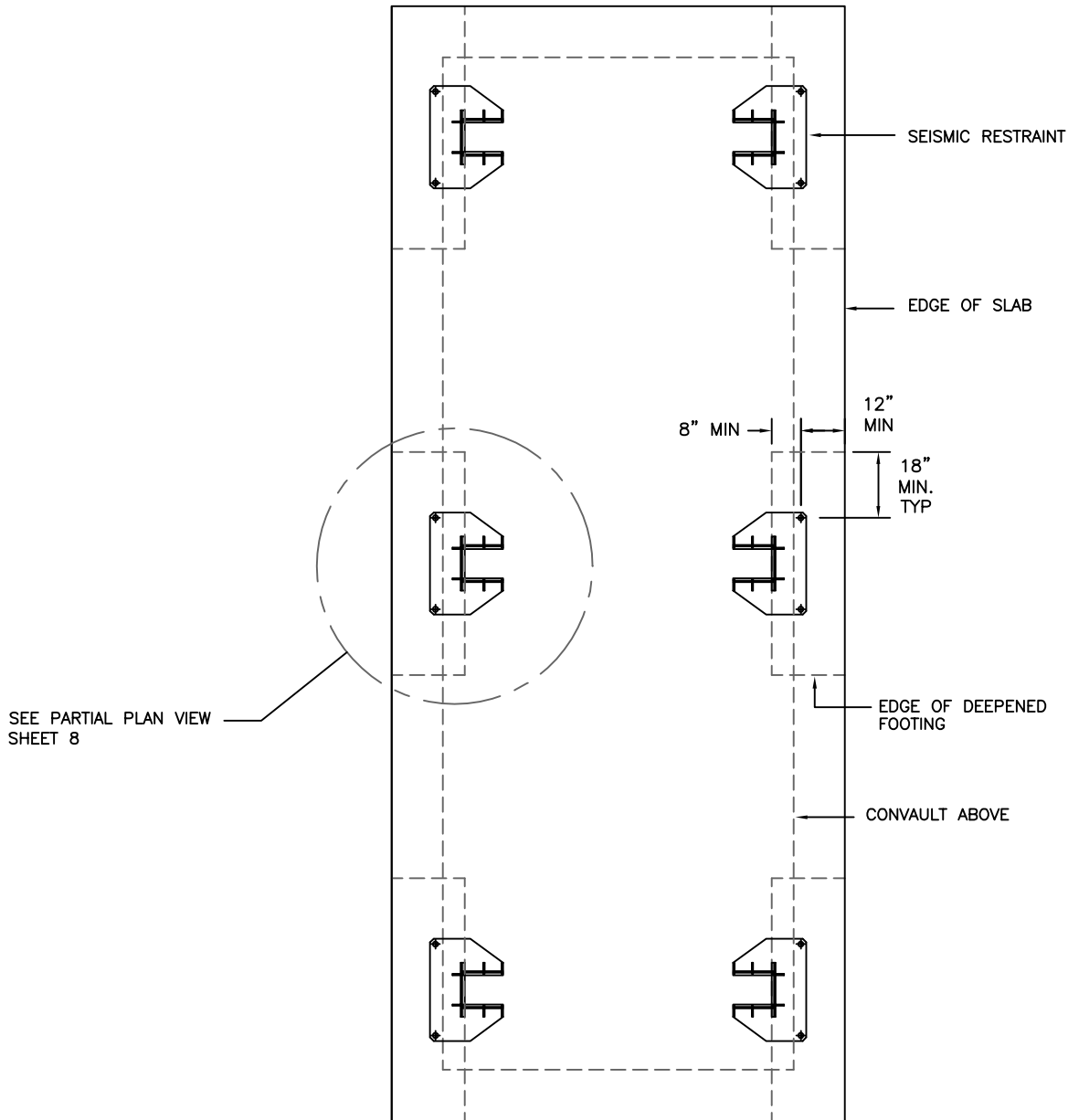
CONVAULT TANK (GAL)	MIN FTG THKNSS (IN) "T"
3000	10"
4000	10"
5200	12"
6000	12"
8000	12"
10000	14"
12000	16"



SECTION A

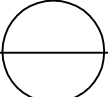
DETAIL  SEISMIC RESTRAINT
 $\frac{3}{4}$ " $1 < SDS \leq 1.5$





PLAN VIEW OF CONCRETE SLAB



DETAIL  SEISMIC RESTRAINT
1/4" 1 < SDS ≤ 1.5

VS₂R ENGINEERING, INC

2730 TAHOE DRIVE - LIVERMORE, CA. 94550 - (925) 373-6067