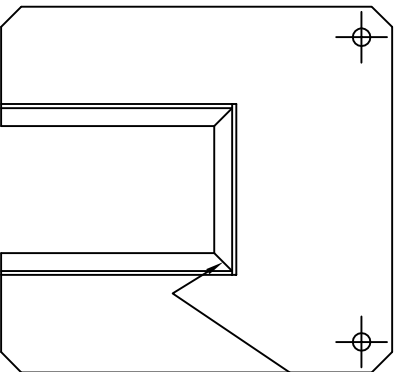
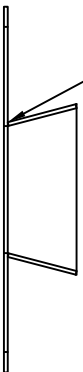


TANK LEG DIMENSIONS

X	Y	Z	P
7	6	4	.43
7 1/2	6 1/2	4 1/2	.39
7	6 1/4	4	.33
7 1/2	6	6	.43
7 3/4	6	3 3/4	.80
7 3/4	6	4	.75
8	6	4	.85
8	6	5	.69
8 1/4	6	4	.95
8 1/4	6	4 1/4	.90
9	6	4	.43
9 1/2	8	6	.43
10	8	6	.58
11	8	6	.85
11 1/4	8	6	.92
12	8	6	1.11



(3 SIDES) 3/16 2 @ 4 1/4



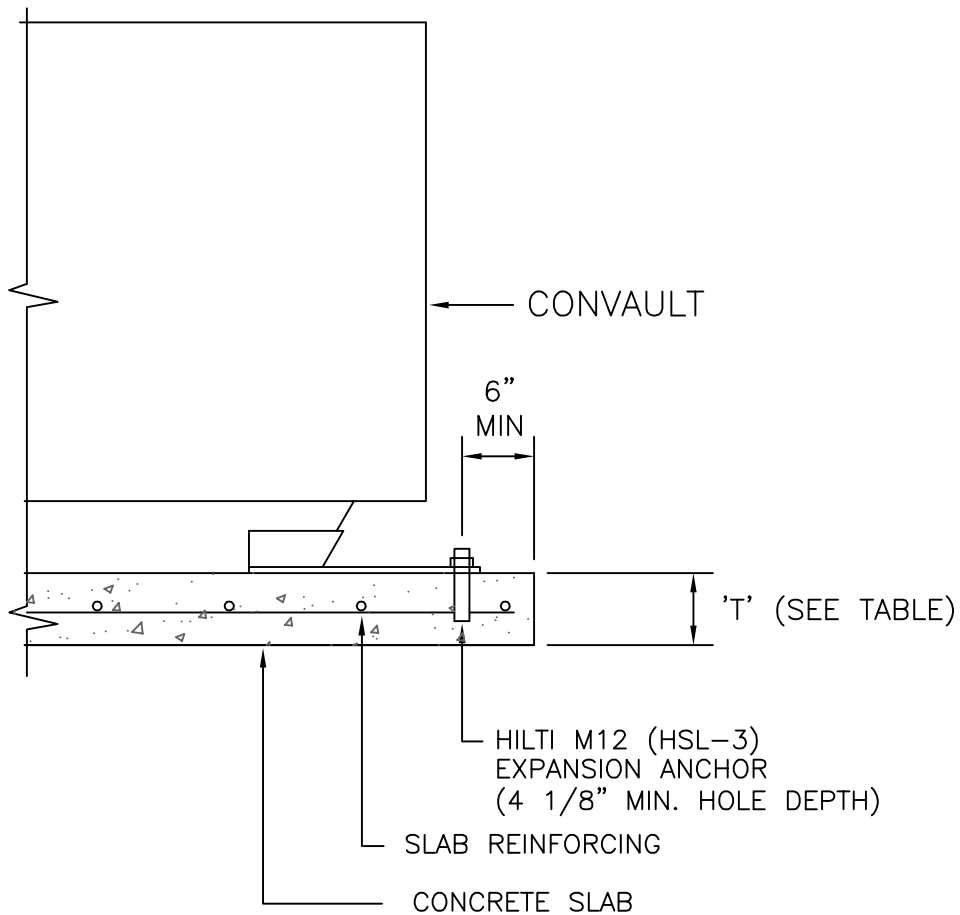
THIS DRAWING PERTAINS TO THE 2007 CBC, 2006 IBC PROVISIONS FOR (SITE CLASS "D",  $S_{gs} \leq 1.0$ )

NOTES:

1. USE 3/16 THICK STEEL PLATE FOR FABRICATION.
2. TO OBTAIN "P" DIMENSION SEE TABLE.
3. UNIT TO BE HOT-DIPPED GALVANIZED AFTER FABRICATION.
4. FOUR (4) RESTRAINTS REQUIRED PER TANK.
5. HILT M12 3/4# OR EQUIVALENT ANCHOR BOLT.
6. 4" 1/8" MINIMUM EMBEDMENT DEPTH.
7. 6" MINIMUM DISTANCE FROM EDGE OF CONCRETE SLAB/FOOTING.
8. CONCRETE SLAB TO HAVE MINIMUM 5000 PSI COMPRESSIVE STRENGTH.

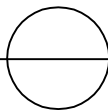
7-30-09	UPDATED TO 2006 IBC, 2007 CBC	TYS	TYS	TEL	JE	SCALE: 1:10(DR)	TOW	L	CHK: JOHN E.
5-5-99	RECALCULATED SIDE BARS	TEL	JE	DATE	DR	SEISMIC RESTRAINTS FOR 250-2000 GAL CONVAULT TANKS			
1-7-96	INITIAL RELEASE	TEL	JE	DATE	DR	DO NOT SCALE DRAWING			
ALL DIMENSIONS ±1/16" UNLESS OTHERWISE SPECIFIED ALL DIMENSIONS IN INCHES, UNLESS OTHERWISE SPECIFIED STEEL PLATE THICKNESS DEPENDS UPON TANK SIZE									

TEL: 800-222-7099 FAX: 209-632-4711  
 SCALE: 1:10(DR) TOW L CHK: JOHN E.  
 DWG. No: GEN001 Pg: 1



CONVAULT TANK (GAL)	MIN SLAB THKNSS (IN)
250	6"
500	6"
1000	6"
2000	6"

DETAIL  
3/4"



SECTION AT SEISMIC RESTRAINT  
SDS ≤ 1



**VS<sub>2</sub>R ENGINEERING, INC**

2730 TAHOE DRIVE - LIVERMORE, CA. 94550 - (925) 373-6067